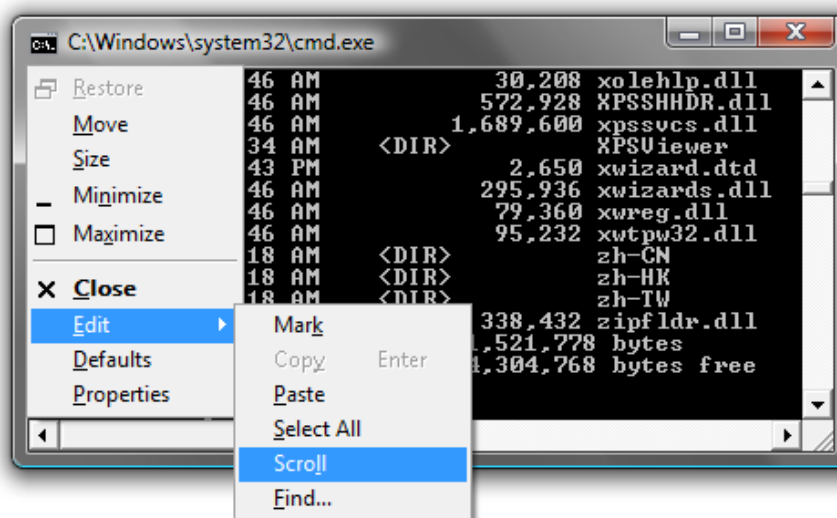


KEYBOARD NINJA – SCROLLING THE WINDOWS COMMAND PROMPT WITH ONLY THE KEYBOARD

The Windows command prompt (`cmd.exe`) has always been known for being underpowered compared to **Linux**, but have you ever noticed that to view the output of a long command you have to resort to the mouse to scroll?

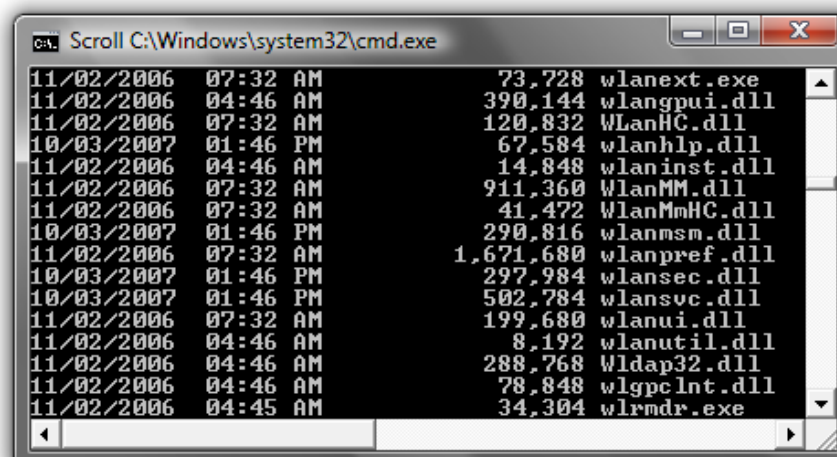
You can easily scroll with just the keyboard, but to get into the “**Scroll Mode**” you’ll have to use a 4-key combination that reminds me of cheat codes on old nintendo games... Up, Up, Down, Down...

Press **Alt+Space** together, and then **E**, then **L**



Enable Scroll Mode on MS-DOS

This will put the command prompt into “**Scroll**” mode, where you can use the **Page Up/Down** keys as well as the arrow keys.



Enable Scroll Mode on MS-DOS

To get out of this mode, you can hit the **Esc** or **Enter** keys.

One of the most annoying instances of this problem is when trying to view the output of the **ipconfig** command... it always stretches beyond the current page on my system... now I can finally use the keyboard.