

SQL SERVER – RUN SSMS AS DIFFERENT WINDOWS USER

When connecting to a server from **SSMS** using **Windows Authentication**, you are limited to using only user which you used to log on to **Windows**. For example, if you login using *User1* on **Windows** and launch **SSMS**, you can only use *User1* to connect to a server from **SSMS** as shown below, the **User** name box is grayed out:



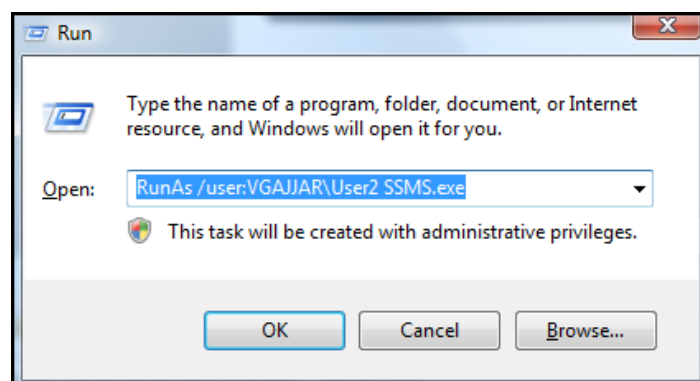
To use a different user without logging of and logging in as different user on Windows, you can use **RunAs** command to launch an application under different user's context.

The general syntax for **RunAs** is as follows:

```
RunAs /user:DOMAIN\UserName ProgramName
```

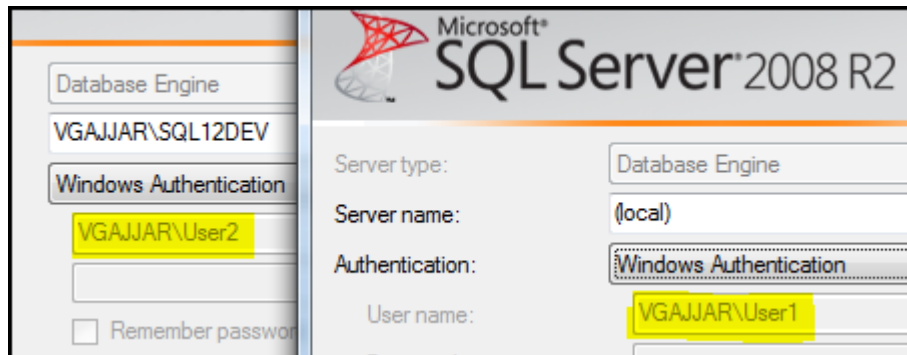
To Run SSMS as different Windows user:

1. Go to *Start -> Run*,
2. Type following command in text box and press **Enter**, this will launch command prompt to get user's password:



3. Provide user's password and press enter;
4. Enter the password for **VGAJJAR\User2**: This will launch **SSMS** under *User2's* context.

Using this method you can run multiple instances of **SSMS** side-by-side under different user contexts:



To get more information about **RunAs** parameters, type **RunAs /?** at command prompt.

Hope This Helps!