

HOW TO RECYCLE YOUR 2.5 HDD INTO PORTABLE EXTERNAL HDD

In case you replaced your laptop or desktop hard drive with a new **SATA** harddrive, what you do with your old **2.5 HDD** ? Well, instead of throwing it out or selling it at the cheap rate, you can easily convert it into **Portable HardDrive**. By buying a simple external enclosure, you can recycle your hard drive.



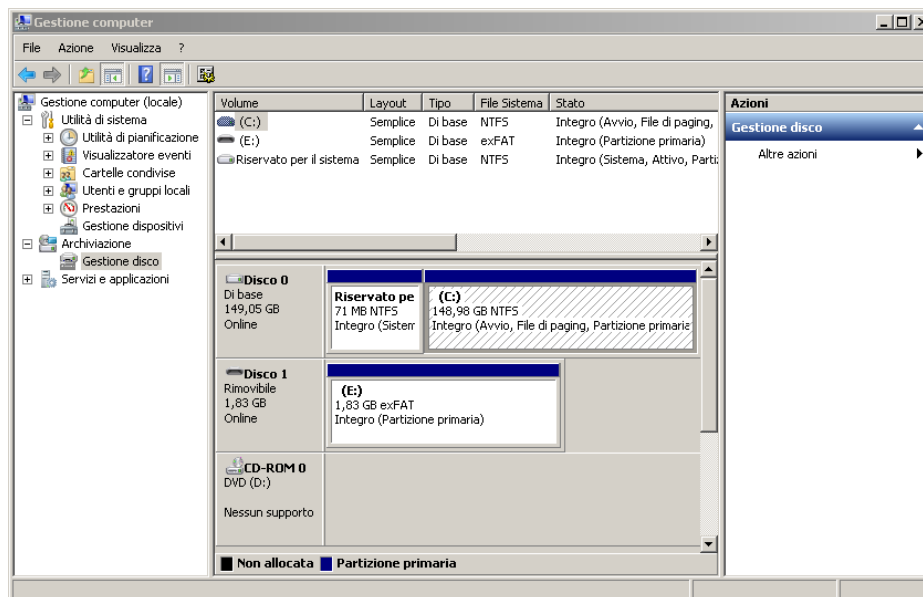
First of all make sure your **Hard Drive** is **SATA** or **IDE**, and accordingly buy an external enclosure. Once you bought the enclosure, follow these simple steps to install your hard drive:

- Using a *screwdriver*, remove the screws to open your case.
- Remove the cover.
- Insert and then plug the hard drive on the **S-ATA** box.
- Depending on your case, it may be that you have to attach the hard disk to the housing so it does not move.
- Close the box.
- Screw it. And now, you have a portable external hard drive!

Connect the external hard drive to the computer:

Before you can copy files to your external hard drive, you need it to be repartitioned and formatted. Here is how to do that:

- Plug the power cable to the back of the limp and then connect your hard drive to your computer using the supplied **USB** cable.
- **Windows** detects and automatically installs the new **USB** device.
- If the drive had several partitions, they all appear in **Windows Explorer**.
- If you want to delete all partitions to have one, click the right mouse button on the **Computer** icon in the *Start menu* and click **Manage**.
- In the window management of the computer that appears, unroll the item **Storage** then click **Disk Management**.



- In the list below, identify your portable external hard drive. The list of all partitions in it is displayed.
- Click the right mouse button on the first partition on that drive and click **Delete Volume** and then **YES**.
- The space goes into "unallocated".
- Repeat for other partitions on that disk. The unallocated space will increase accordingly.
- In the case of an extended partition, right-click the right mouse button and click **Delete Partition**. Confirm with **Yes**.
- Note that it may be a space of a hundred MB reserved for the system that you can not delete.
- Finally, click on the unallocated space freed with the right mouse button and click **New Simple Volume**.
- In the wizard that opens, click **Next**.
- Specify the size of the new partition, the maximum size available here. Click **Next**.
- Choose the letter of the explorer to assign to the hard drive and click **Next**.
- Then choose to format the drive to **NTFS**, give it a name, uncheck the *Perform a quick format* to verify the same time the integrity of your hard drive and click **Next**.
- Finally, click **Finish**.
- Preparing your hard drive begins.
- After few minutes, the operation is complete.
- Your external hard drive can now be used. It appears in **Windows Explorer**.