

## HOW TO CONFIGURE AND USE VISUALWGET (WGET-GUI-BASED DOWNLOAD MANAGER)

### START VISUALWGET AND SETUP YOUR OPTIONS

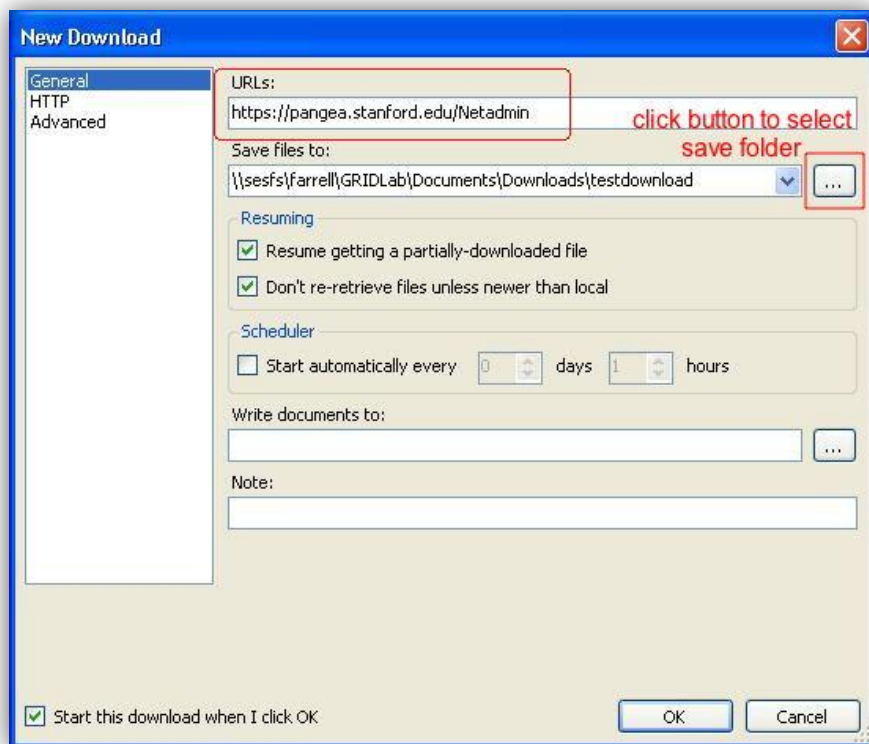
In **VisualWget**, you first create a download definition that has all the information needed to download the files you want from a website. Those definitions are saved by the program (unless you remove them), so they can be reused if the website has changed and you want to update your downloaded files to match.

To create a new download definition, select the **New...** item in the **Downloads** menu (this is in the normal location of the **File** menu). You will be given the option of simply typing the **URL** of a single web page to download, or defining a set of options for your download.

In order to download an entire website, you need to define options, so select that.

**Warning:** while you are setting options in the New Download window, do not click the "OK" button. That button immediately starts the downloading process. Only click that button after all options have been set.

The **New Download** window will open, starting at the **General** options, as shown in the annotated screenshot below:



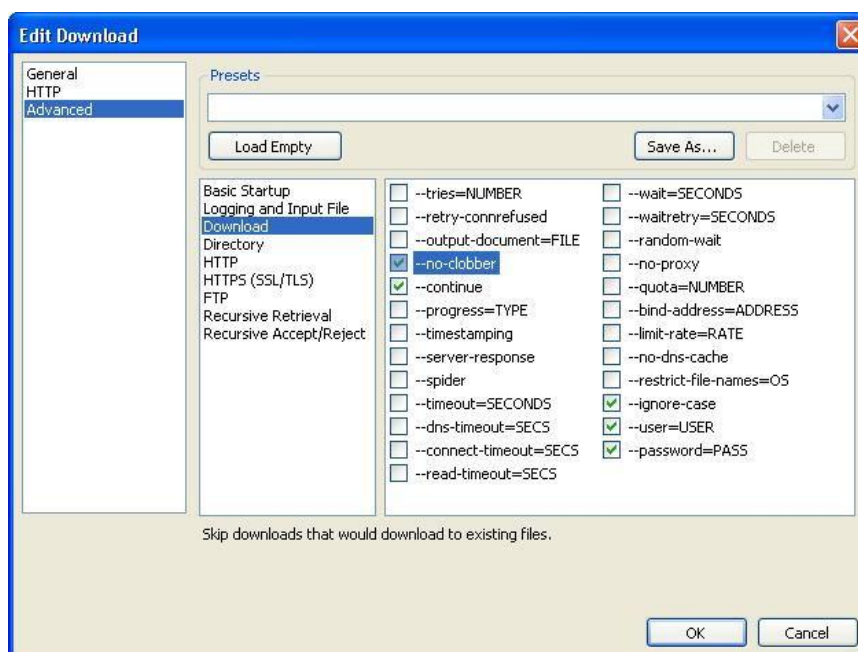
Simply type (*or cut and paste*) the URL of the website you want to download in the "URLs" field (outlined in the red box). Next, tell the program where to setup the directory structure and saved files from this website. Click on the button to the right of the "Save files to:" field (*outlined in red with annotated instructions*) to bring up the

standard **Windows open dialog box**. Navigate to the folder of your choice and select it. The two options under “**Resuming**” are normally checked and should be left alone.

Now you need to select some other options that are necessary or useful for downloading an entire website. I will only describe the minimum set of selections you need for downloading a well-behaved website. If you have problems getting the download to work, you should look at the other options. Clicking an option name (**not** the checkbox next to it) will give a one-line explanation. Since **VisualWget** is just a front-end to the **Wget** program, and uses the same option names, you can get detailed descriptions of what these options do from the [official Wget on-line manual](#).

Click on the **Advanced** field on the left side of this **New Download** window. This gives you a whole series of sub-sections, each of which has a series of options you can select by clicking on checkboxes. The first sub-section you need to configure is **Download**. Here are my recommended options for the **Download** subsection, as shown in the screenshot below.

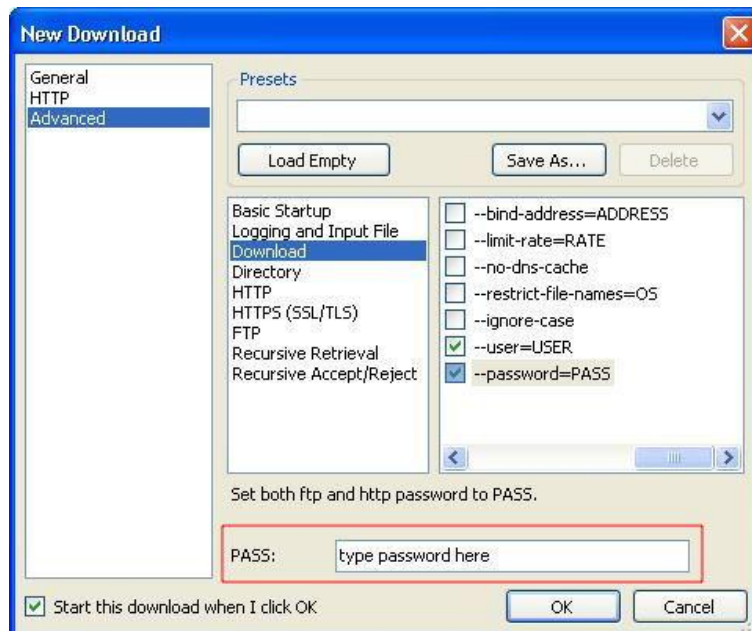
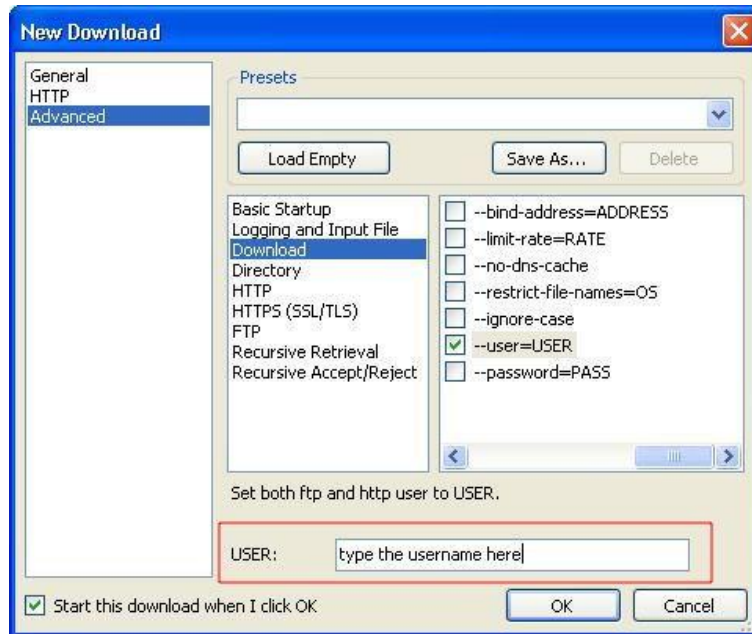
- `--no-clobber`: Prevents a downloaded file from overwriting an existing file on disk.
- `--continue`: If the download is interrupted, and you restart it, finish getting any partially downloaded files.
- `--ignore-case`: Treat uppercase and lowercase letters the same when downloading files. For example, a jpeg image file could end with either .JPG or .jpg and this option treats them the same.
- `--user=USER`: **Optional** - check this if the site you are visiting requires a login with username and password. This will probably only work in the case where your browser prompts you for username and password before showing any part of the website. It will probably not work in the case where you have to type in your username and password on fields on the web page (for example, most banking websites). See instructions after the screenshot for how to enter the actual user name.
- `--password=PASS`: **Optional** - use under same conditions as the `--user=USER` option, above. They go together.



If you checked the `--user=USER` and `--password=PASS` options in the Download subsection (above), you have another step: you have to enter the username and password for the website. You do this by clicking on the option name itself (for

example, clicking on the text `-user=USER`), **not** on the checkbox. That opens a new field in the lower part of the window where you can type the value needed.

For example, in the annotated screenshot below, I have clicked on the `-user=USER` text, and that gives me a `USER:` field where I can type the **username** needed to login to the site. The second screenshot shows the same thing for the `-password=PASS` option.



Now, you have to set the options that tell Wget to get the entire contents of the website, not just the one page in the URL you specified.

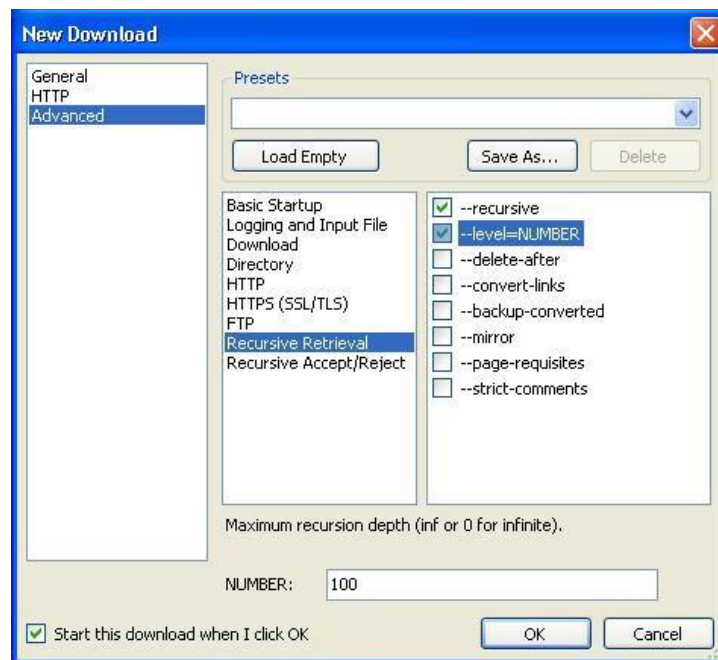
Click on the **Recursive Retrieval** subsection heading of the **Advanced** options. Here you have to check the box next to two key options, as shown in the screenshot below.

- `--recursive`  
This tells the program to follow links from the first URL, and then links from those links, etc, until it has downloaded the entire website. It will not follow links that go to other domains (off this website).
- `--level=NUMBER`: This option controls how far recursive downloading will be pursued. The original website URL is the first “**level**” of the site. The pages that it links to are the second level. Within those second level pages are links to third level pages, etc. This parameter controls the maximum number of levels that will be downloaded before the program stops.

Although the program allows “**infinite**” recursion, this is not a good idea. A poorly programmed website, especially one with dynamic content, may result in links that point back to other levels, with perhaps very slight changes, resulting in another round of downloads, ad infinitum. It’s best to put in a large, but finite, number that should be comfortably larger than the number of levels you expect.

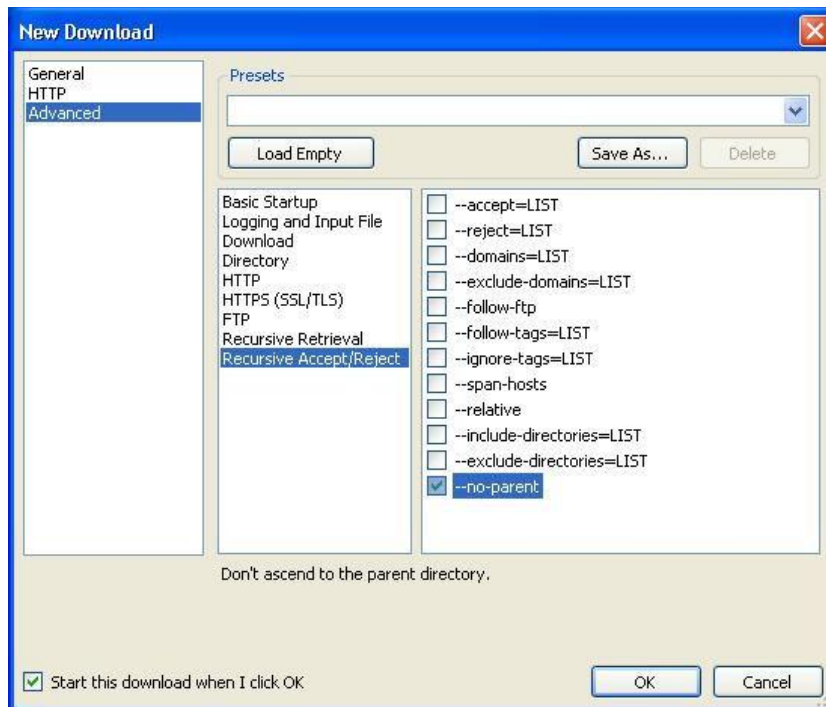
For example, in the screenshot below, I use “**100**” as the number of levels. As for the username and password options, you click on the text of the option name itself (`--level=NUMBER`) in order to bring up the “**NUMBER**” field where you can enter the maximum number of levels for the recursive downloads.

It is also a good idea to do a test run of your website download with this level parameter set to “**2**”. That will verify that it does follow links, but minimize the number of files downloaded for the test.



There is one more option you should set to make sure your download does not get extra files that you don’t want. Click on the **Recursive Accept/Reject** subsection heading of the **Advanced** options. As shown in the screenshot below, click the box next to the `--no-parent` option.

This option tells the program not to follow links that go back up to a higher level of the website. For example, if you are downloading `http://pangea.stanford.edu/Netadmin/`, this option will prevent the program from following links that go back up to the parent site at `http://pangea.stanford.edu/`



## RUN YOUR DOWNLOAD JOB

Following the instructions above, you have configured the options for a website download job in **VisualWget**. Now simply click on the **OK** button in this **New Download** window to start the downloading process.

**VisualWget** saves your download job definitions. You can re-run the job later, perhaps with modified options. To edit the definitions before re-running, you can right-click on the definition name in the main **VisualWget** window, and then select the **Edit** item, as shown in this screenshot:

