

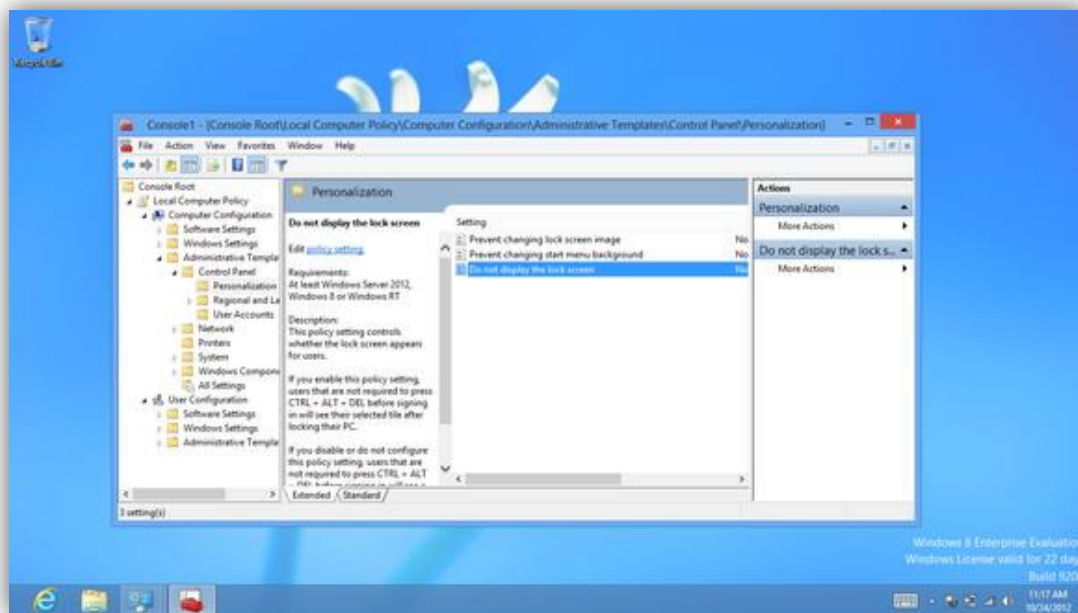
DISABLE THE LOCK SCREEN (WINDOWS 8)

If you like your PC to boot just as fast as possible then the new **Windows 8** lock screen may not appeal. Don't worry, though, if you'd like to ditch this then it only takes a moment.

- Launch **GPedit.msc** (the **Local Group Policy Editor**) and browse to **Computer Configuration > Administrative Templates > Control Panel > Personalisation**.
- Double-click '**Do not display the lock screen**', select **Enabled** and click **OK**.
- Restart and the lock screen will have gone.

If you can't easily find **GPedit.msc** by searching in the **Start** screen, search for '**mmc**', and then press **Enter**.

On the **File** menu, click '**Add/Remove Snap-in**', then in the '**Add or Remove Snap-ins**' dialog box, click '**Group Policy Object Editor**', and then click '**Add**'.



In the '**Select Group Policy Object**' dialog box, click '**Browse**'. Click '**This Computer**' to edit the **Local Group Policy** object, or click '**Users**' to edit **Administrator**, **Non-Administrator**, or per-user **Local Group Policy** objects, then click '**Finish**'.